

# Enogalax

**Modularity** at the  
service of taste



# Enogalax

## One for all, all for one

From a single module to a complete, exclusive, and innovative wine room, Enogalax is the ultimate expression of the art of composition. The result of collaboration between Enofrigo and a famous designer, Enogalax is an evolved system that combines technology, design and flexibility to deliver an infinite range of modular solutions.

## Dynamic architecture in infinitely modular spaces

The modular dimensions of all elements permit installation in innumerable different configurations to suit all space, display and storage needs. Displays can be configured single or double sided, and with on-board or remote motor. Shelves can be repositioned easily for maximum versatility and to optimize either capacity or visibility.



Modular System



Practical space



Custom internal layout



wine



# Enogalax

## Total freedom of arrangement

Each module is offered either without cover, to be integrated in existing furnishings, or with cover, with a wide range of serial and custom-made finishes that can suit any ambiance. If the space furniture changes, all it needs is changing the dress.

## Modular system

All the system elements are sized according to a modularity criterion so that it is possible to create an infinite number of configurations for any kind of space and displaying/conservation need: they can be mono and bi-facial and can be self-contained or remote connected.

## Linings

Cabinet structure covered in "metal" (22) or "soft touch" (21) laminates. Door frames are in grey or black anodized aluminum.



22  
Brushed  
Aluminum Grey



21  
"Soft Touch"  
Matte Black

- Get in contact with factory for other colors







## A “spatial” system

Enogalax creates space and favors operations: it helps dividing and screening areas, creating different zones inside the same room or even large autonomous spaces, without building walls.

## More space for contents

A versatile system of easily adjustable shelves and the absence of grilles and cooling devices that obstruct the bottle compartment enable full use of available space, maximize functionality and convenience and ensure easy access to contents.

## An extremely innovative frame design

Minimalist, with a considerable thickness, it creates a particular light and shade effect highlighting the displayed products. An elegant, recessed handle provides an excellent grip and avoids annoying protrusions towards the user.

## Choice of modules with remote motor or motor in technical compartment

Individual modules come with provision for a remote system (to avoid heat and noise in the room where they are installed) or have a technical compartment with an on-board motor.



# Enogalax

## Single or Pass Through

Single (Wall) or pass through (Island) exposure for maximum capacity or better visibility of the bottle. Each display cabinet can be opened with glass doors either from one side, with a fixed back (blind or glass-topped - Optional), or from both sides.



24V LED light  
in warm white  
2700 °K

Right or left  
opening doors to  
suit your needs

Innovative soft  
touch panels

Handle  
recessed into  
the structure





# Enogalax

**Enogalax contains the best of Enofrigo technology**

**Relative humidity digital control**

As an option, you can control and maintain the humidity level above 50%, to create the perfect storage environment for bottle corks and labels.

**Temperature**

The temperature range of this line goes from + 39 to 68 °F, which can be set easily by the operator for each module.

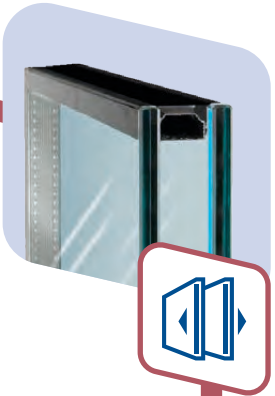
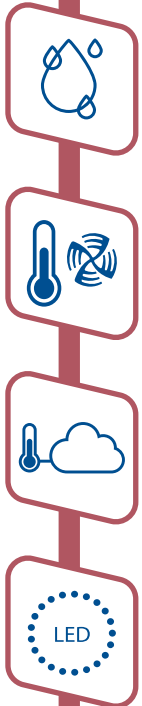
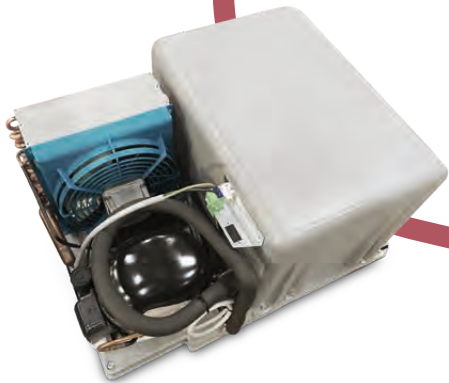
**Remote control (IoT)**

Wine cellar can be controlled remotely using an optional Wi-Fi module and the cloud platform.

**Integrated Dimmable LED lighting**

Being able to adjust your light source means you're able to create the perfect atmosphere in your room, anytime. Warm white LED 2700°K now standard with opaline diffuser.

**Independent refrigeration unit**



**Low emission internal glass**

**Energy efficient**

With LED lighting, 1.96" thick insulation, a 1.1" thick low emissions, double-glazing glass door and a control system which improves the efficiency of the refrigeration equipment, energy consumption is quite low in this unit.



# Enogalax

## The shelf system

The shelf system enables great flexibility and adapts to different exhibition displays. Users can choose their preferred composition, favouring either capacity or visibility. Shelves made in polycarbonate and stainless steel can be positioned at different heights and they can be slanted.

Quartz and stainless steel shelves can be fitted sloping in two positions

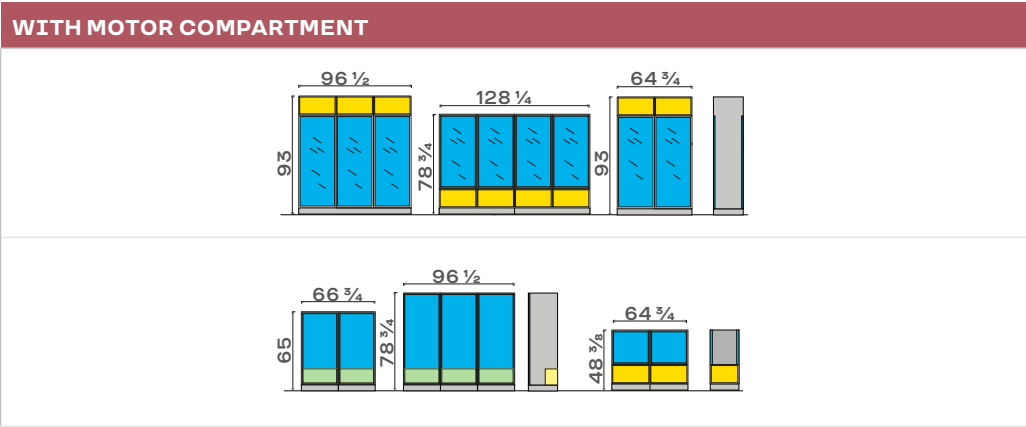
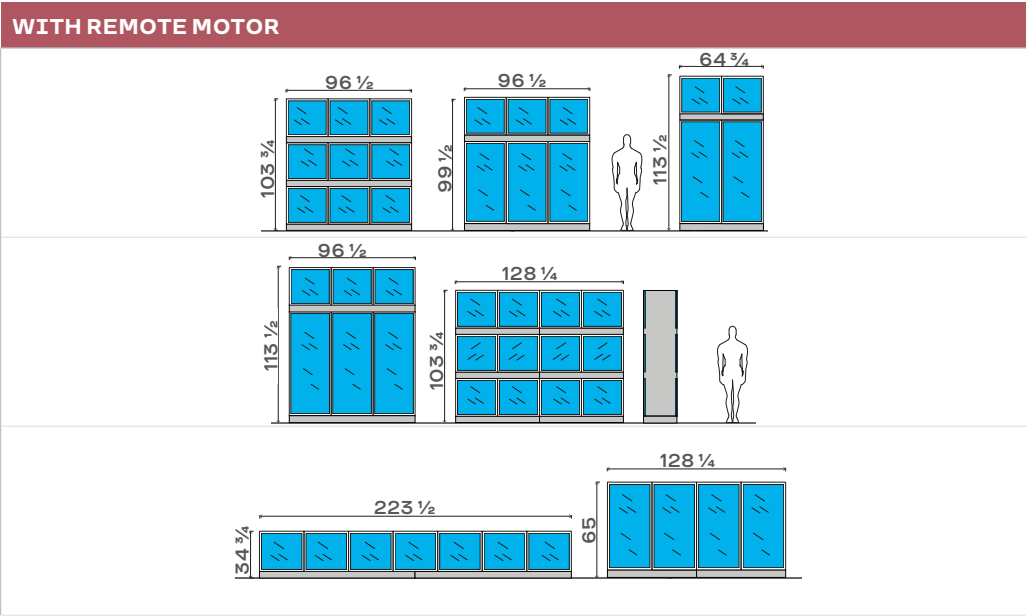



Fully removable shelves for easy cleaning (dishwasher compatible)





Examples of configurations



MODEL			Code	USD	 Bordeaux (UP TO)
H800 ONE DOOR	DOOR H800	ONE DOOR	A1GM1A1U*U	12,830	68
H1200 ONE DOOR	DOOR H800	ONE DOOR	A1GM2B1U*U	13,505	68
H1600 ONE DOOR	DOOR H1600	ONE DOOR	A1GM3A1U*U	15,640	167
H2000 ONE DOOR	DOOR H1600	ONE DOOR	A1GM4B1U*U	17,170	192
H2000 ONE DOOR	DOOR H2000	ONE DOOR	A1GM5A1U*U	16,750	215
H2400 ONE DOOR	DOOR H2000	ONE DOOR	A1GM6B1U*U	18,280	240
H1200 PASS THROUGH DOORS	DOOR H800	PASS THROUGH DOORS	A1GB2B1U*U	15,500	68
H2000 PASS THROUGH DOORS	DOOR H1600	PASS THROUGH DOORS	A1GB4B1U*U	18,345	192
H2400 PASS THROUGH DOORS	DOOR H2000	PASS THROUGH DOORS	A1GB6B1U*U	19,075	240

